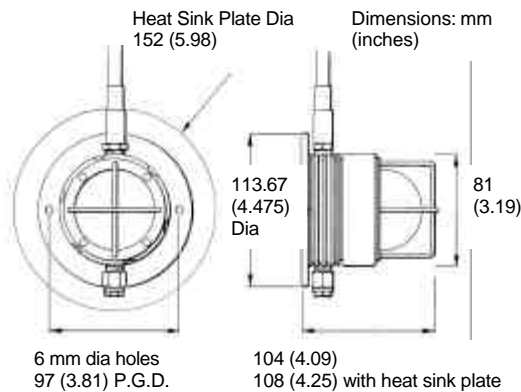


AQUABEAM HB-21 HYPERBARIC LIGHT FIXTURE



A 'safe' luminaire designed to provide general illumination within the S.D.C. and D. D.C., the HB-21 embodies a rugged, 24 volt, 21 watt incandescent lamp which is available with either clear or frosted envelope. The domed lens of the fixture is offered in clear borosilicate glass or with internal 'frosting', affording the combination of lamp and dome to produce the degree of diffusion required.

The luminaire is fitted with a helium relief valve to eliminate post decompression explosion hazard and a stainless steel cage protects the glass dome from accidental damage and 'blanketing', which could give rise to overheating.

A heat-sink plate is available to increase the base area of the fixture for additional cooling when it is not mounted directly to metalwork within the vessel or when the contact area is small.

An integral On/Off Switch is a further option. This is built into an alternative cable penetrator to offer individual control of the luminaire.

Lamp replacement is effected by unscrewing the dome bezel and removing dome, bezel, and cage. No tools are required for this operation but it is not possible to remove the dome with ambient pressure significantly above one atmosphere, thus maintaining the designed security of the fixture against tampering during diving operations.

Technical data

Weight: Basic Fixture:

0.875 kg (1.93 lbs)

With Heat-Sink Plate:

1.125 kg (2.48 lbs)

Materials:

Aluminium (HE 30), stainless steel, brass, ceramic, borosilicate glass, and neoprene.

Finish:

Hard anodized black.

Connector:

ARMG-3-MP with stainless steel locking sleeve.

He Relief Valve Cracking Pressure:

5 p.s.i. (Max.).

Depth Rating:

Standard fixtures are tested to 70 bar absolute. Greater test pressures will be applied against specific requirement.

Operating Temperature:

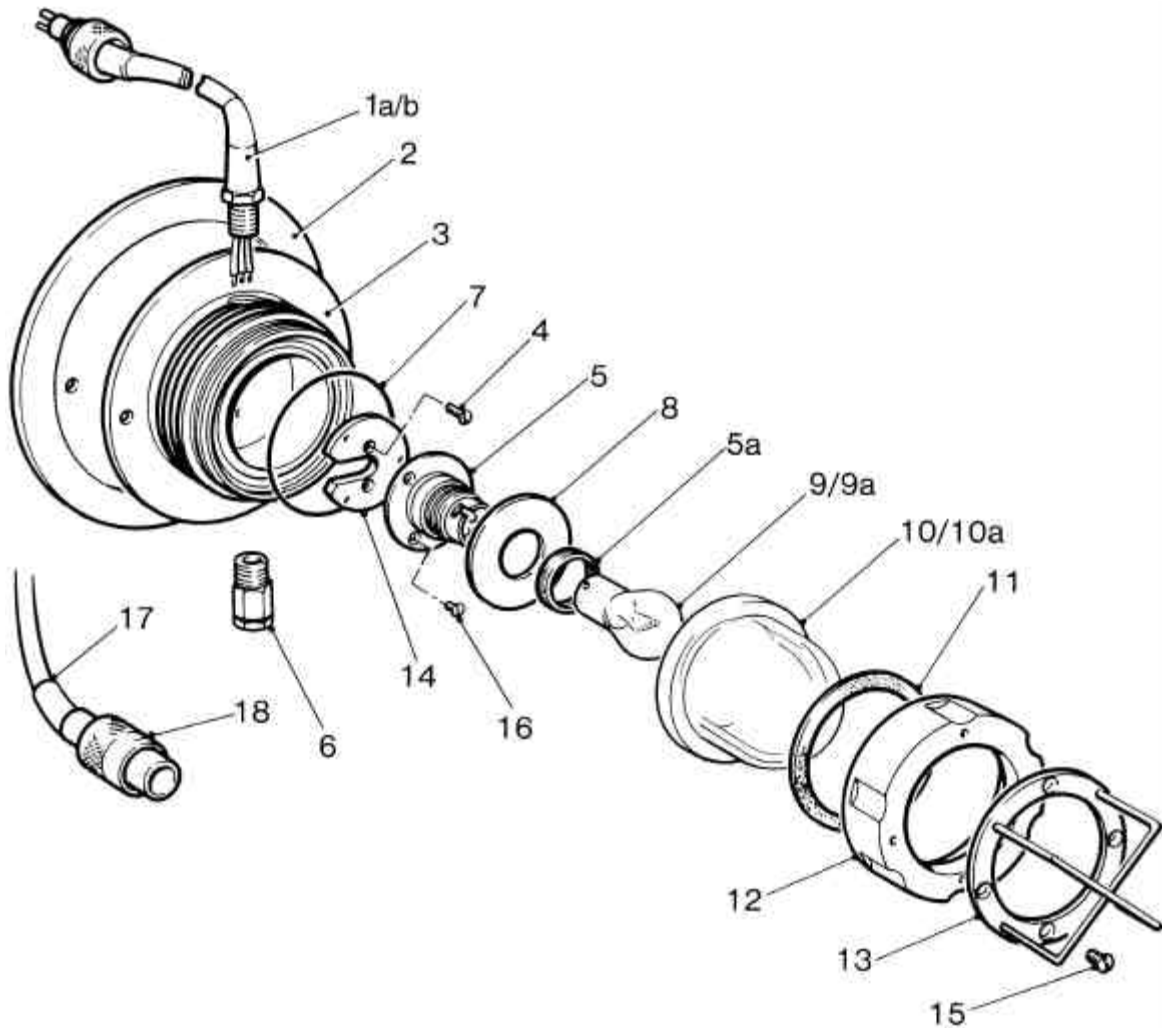
In free air at 22°C ambient, the basic fixture operates at 55°C and less than 50°C with heat-sink plate. Lower operating temperatures may be expected when the fixture is mounted on a conductive mass, exceeding the dimensions of the heat sink plate.

Approvals: Det Norske Veritas. Type Approval Certificate No. E609.

Ordering Advice: Order the basic fixture with clear dome by the code: HB-21C, and the basic fixture with frosted dome by: HB-21F. Add + SW if a switch is required. Heat-sink plates, lamps and spare parts should be ordered under the relevant Part Code.



AQUABEAM HB-21 HYPERBARIC LIGHT FIXTURE



HB-21 Components:

Index	Description	Part Code	Index	Description	Part Code
1a	Penetrator/Connector Assy	HH10*	10	Dome-Clear	MVT29
1b	Pen./Conn.Assy with switch	LH10S*	10a	Dome-Frosted	MVT30
2	Heat-Sink Plate	LH11	11	Dome-Washer	MV18
3	Body	LH12	12	Bezel	HH22
4	Screw-Lampholder Mount	HH13	13	Guard	HH23
5&5a	Lampholder & Locking Ring	HH14	14	Lampholder Mount	HH19
6	Helium Relief Valve	LH15*	15	Screw-Guard	HH20
7	O'ring-Dome	LH16	16	Screw-Lampholder	HH21
8	Reflector	HH17	17	Mating Connector	ARMG-3-FS
9	Lamp-Clear	HH346	18	Locking Sleeve	LH24
9a	Lamp-Frosted	H346F			

Note: Items 5&5a are not available as separate components.

**If this item is replaced on a penetrator, the latter must be fully tested and certified before operation within the DDC or SDC. This is a strict requirement under the maintenance of Type Approval.*

