

AQUABEAM LP-20 LOW PROFILE HYPERBARIC LIGHT FIXTURE



Designed specifically for installation within the limited confines of the S.D.C. and D.D. C., the LP-20 light fixture offers a high, well diffused output with maximum safety, easy servicing and choice of two operating voltages. The lamp house embodies a toughened, frosted lens, and is fitted with a relief valve to eliminate post decompression explosion hazard. In the event of helium ingress into the lamp, it's effect is minimized in the use of miniature, tungsten halogen capsules, i.e. small lamp - small cavity. A heat-sink plate is available to increase the base area of the fixture for additional cooling, when it is not mounted directly to metalwork within the vessel.

When the fixture is installed as an individual bunk light, adjacent bunk dazzle may be eliminated by the fitting of an extended bezel. The bezel extension also serves to prevent accidental blanketing of the lens and consequential overheating. An integral On/Off Switch is a further option. This is built into an alternative cable penetrator to offer individual control of the luminaire.

Connector:
 ARMG-3MP with stainless steel locking sleeve.

Operating Temperature:
 In free air at 22°C ambient, the basic fixture operates at 48°C and less than 43°C with heat-sink plate. Lower operating temperatures may be expected when the basic fixture is mounted directly on to any conductive mass exceeding the dimensions of the heat-sink plate.

Approvals:
 Det Norske Veritas, Type Approval Certificate No.E609.

Pressure Rating:
 Each fixture is hydrostatically tested to 70 bars (absolute). Greater test pressures will be applied on request.

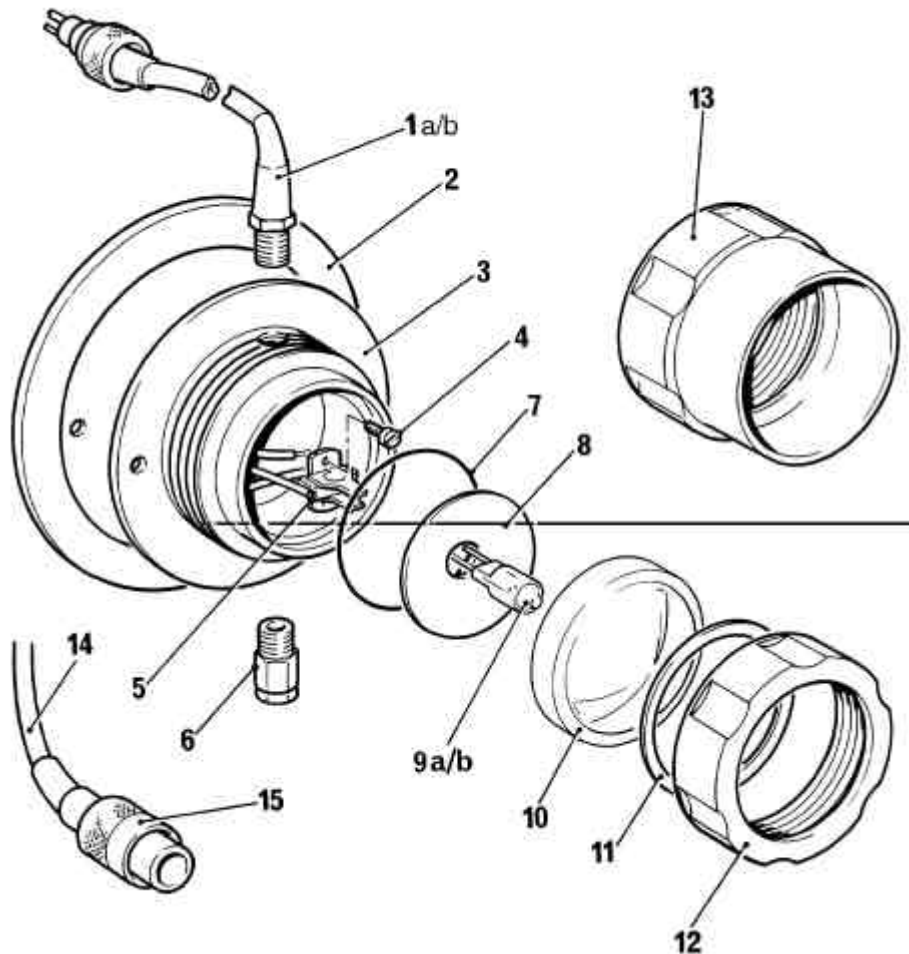
Ordering Advice:
 Order basic fixture by the code LP-20 with extended bezel by LP-20 EB. Add + SW if a switch is required. Heat-sink plate, lamps, mating connectors, etc., should be ordered by the relevant Part Codes.

Dimensions	Diameter		Height		Weight	
	mm	(inch)	mm	(inch)	kg	(lbs)
Basic Fixture	114	(4.45)	57.0	(2.24)	0.66	(1.45)
with extended bezel (EB)	114	(4.45)	79.5	(3.13)	0.73	(1.60)
with heat sink plate (HS)	152	(6.00)	60.7	(2.39)	0.91	(2.00)
with EB and HS	152	(6.10)	83.2	(3.27)	0.98	(2.16)

Mounting Holes: 6 mm (0.236 inch) dia., 97 mm (3.819 inch) between centers.



AQUABEAM LP-20 LOW PROFILE HYPERBARIC LIGHT FIXTURE



LP-20 Components

Index	Description	Part Code	Index	Description	Part Code
1a	Penetrator / Connector Assy	LH 10*	9a	Lamp 12v/20w	LH 18
1b	Pen./Conn. Assy with switch	LH 10S*	9b	Lamp 24v/20w	LH 19
2	Heat-Sink Plate	LH 11	10	Lens (frosted)	LH 20
3	Body	LH 12	11	Lens Washer	LH 21
4	Screw (2)	LH 13	12	Standard Bezel	LH 22
5	Ceramic Lamp holder	LH 14	13	Extended Bezel	LH 23
6	Helium Relief Valve	LH 15*	14	Mating Connector	ARMG-
7	O'ring- Dome	LH 16	3-FS		
8	Reflector	LH 17	15	Locking Sleeve	MV 24

*If this item is replaced in a penetrator, the latter must be fully tested and certified before operation within the DDC or SDC. This is a strict requirement under the maintenance of Type Approval.

Complementary Equipment & Services

Complete cable harnesses with connectors and penetrators to customers instructions.

DDC Lighting power supply and control units, incl. stand-by battery packs, charging units and auto switching systems.

Submersible power supply units, battery packs, charging units and emergency auto switching systems.

A complete range of submersible luminaires covering all requirements for underwater illumination.

