

AQUABEAM VIKING



A most versatile underwater luminaire designed to accommodate a range of linear, tungsten-halogen lamps, covering power ratings to 1000 watts and color temperatures to 3000°K.

The lamphouse is a machined, aluminium die casting, hard anodized and twice impregnated with resin before being finished in Poppy-Red stoved epoxy over etch primer. A toughened lens completes the enclosure, which will withstand immersion to depths of 10,000 f.s.w. The Viking offers an average beam spread of 40 degrees (immersed).

Applications include external bell and habitat illumination, headlights for submersibles and R.O.V.s, static illumination for reactor ponds and diving tanks and lighting for underwater film and television operations.

80 mm Linear Lamps

Code	Volts	Watts
DWZ	30	375
K14-120*	120	100
K14-240*	240	100
K12-120*	120	150
K12-240*	240	150
K15-120*	120	250
K15-240*	240	250
EHR*	120	400
FAD-120	120	650
FAD-240	240	650
DXX	240	80

90 mm Linear Lamps

FCB	120	600
FEA	240	600
DXW-120	120	1000
DXW-240	240	1000

80 mm and 90 mm lamps may be interchanged with the appropriate lamp carriers and reflectors see components list overleaf.

*Rated life-2000 hours

For voltage attenuation figures in respect of other cables - see Data Sheet No. 94001 Aquabeam RMG Connectors.

Options:

* Additional cable to requirement.

* Shrouded bulkhead connector type MV 825/S/L fitted in place of electrical penetrator. With this connector, the Viking is rendered electrically and mechanically interchangeable with similar luminaires of American manufacture.

Appropriate mating connectors and locking sleeves also feature in the Viking range.

* Preferred connector fitted in place of electrical penetrator.

* Carrying handle fitted to lamphouse in place of, or in addition to, yoke assembly.

Dimensions:

Length (excluding penetrator)	168 mm (6.61 ins)
Luminaire diameter	152 mm (6.00 ins)
Max. width (over yoke assy)	245 mm (9.64 ins)
Yoke mounting socket dia.	15.87 mm (0.625 ins)
Dry weight	2.94 kg (6.47 lbs)
Immersed weight	0.79 kg (1.74 lbs)

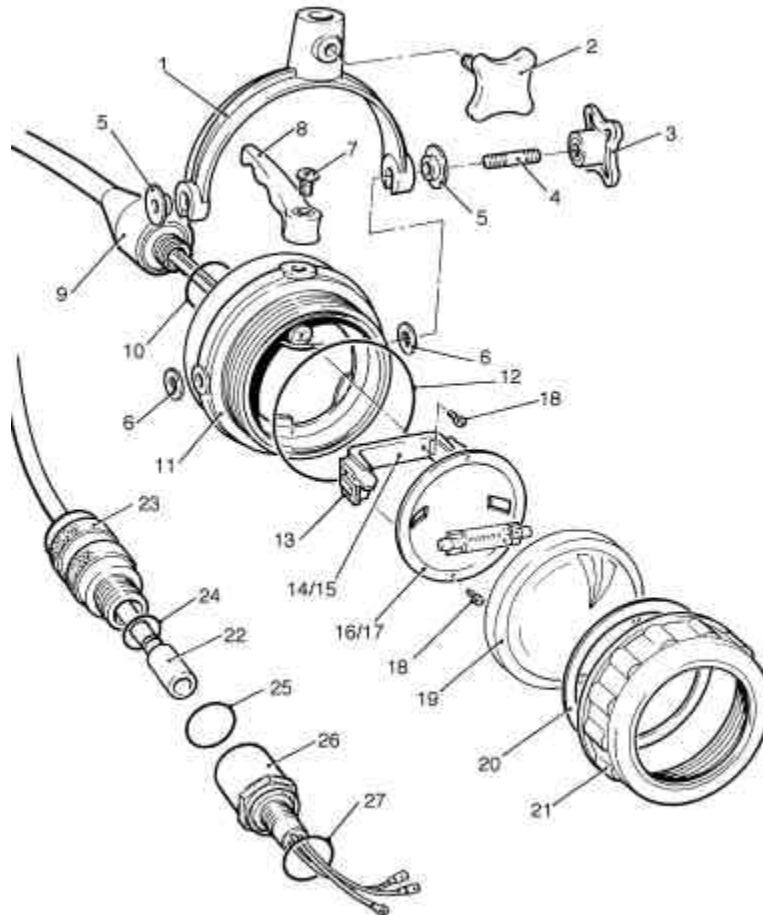
The standard Viking luminaire is fitted with electrical penetrator and 0.5 m cable of 3 x 1.5 mm² copper conductors and an overall polyurethane sheath of 12.7 mm diameter.

The following is a guide to the voltage attenuation which may be expected over cable of this specification.

Supply volts	Lamp Wattage	Current (amps)	Attenuation volts/meter
240	1,000	4,16	0,116
240	800	3,33	0,093
120	1,000	8,33	0,233
120	650	5,42	0,152



AQUABEAM VIKING



VIKING Components:

Index	Description	Part Code	Index	Description	Part Code
1	Yoke	1005/1	15	Carrier-90 mm	1005/12/90
2	Knob-male	1005/1035/M	16	Reflector-80 mm	1005/6/80
3	Knob-female	1005/1035/F	17	Reflector-90 mm	1005/6/90
4	Stud	1005/9	18	Screw (2)	1005/14
5	Washer-top hat	1005/7	19	Lense	1005/3
6	Washer-flat	1005/5	20	Washer-neoprene	1005/13
7	Screw-handle	1005/15	21	Bezel	1005/2
8	Handle	1005/10	22	Female Connector	ARMG-3-FS
9	Penetrator	1005/11	23	Connector Locking Sleeve	1005/20
10	O'ring-pen.	1005/211	24	O'ring -female connector	1005/22
11	Body	1005/4	25	O'ring -locking sleeve	1005/21
12	O'ring lense	1005/246	26	Bulkhead Connector	MV825/S/L
13	Ceramic (2)	1005/943	27	O'ring - bulkhead	1005/213
14	Carrier-80 mm	1005/12/80	-	Bezel Spanner	1005/17

Lense Replacement Advice

Since glass loses it's ability to withstand stress with age and magnitude of stress applied, Viking lenses should be changed .

General Diving Depth in meters	under 30	30-150	150-300	300-600	600-900	900-1200	1200-1500	1500-1800	1800-2100	2100-2400	Over 2400
Maximum No of Lense Dives	*	50	30	20	10	7	6	5	4	3	1

*Change annually

Lenses over 3 years old should not be used beyond 300m

