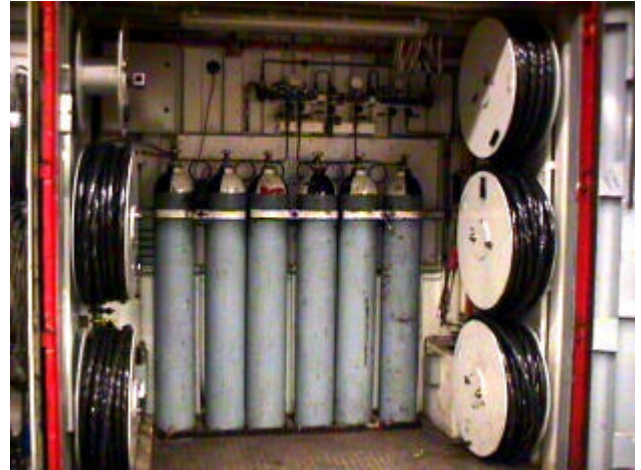


Hytech has years of experience in building life support units. This example shows a life support container that has been in service for years. This specific life support system has been built into a 10 foot container. The container has two compartments: a control room where the operator sits behind the control panel, and a room where the reels, air bottles and connections are placed. The reel room can be reached through normal double container doors. In the side wall of the container is a door to the control room.



The unit's air supply consists of a double high pressure bank. The main and back-up supplies are independent systems, all the way from the bottles to the breathing masks. The container used as an example here can supply five persons with air, it provides communication between operator and workers, and is equipped with a video surveillance system. An alarm unit will warn the operator in case of a low supply pressure situation.



Hytech builds the life support systems to customer specifications. We have already built this type of system for many different customers. It usually has four to eight mask supply lines. Some units have a low-pressure compressor for the main air supply, complete with analyzers to monitor the air quality at the compressor air inlet. It is also possible to build a completely independent unit, with a generator set to power it.



Hytech provides a variety of products for life support applications, like communication systems, escape bottle sets, umbilicals etc. We also build portable life support systems, built into 2 rigid boxes. These systems provide breathing air for 2 or 3 persons.

Besides building new systems, we do the yearly maintenance and certification for most of the units we have built for our customers.

