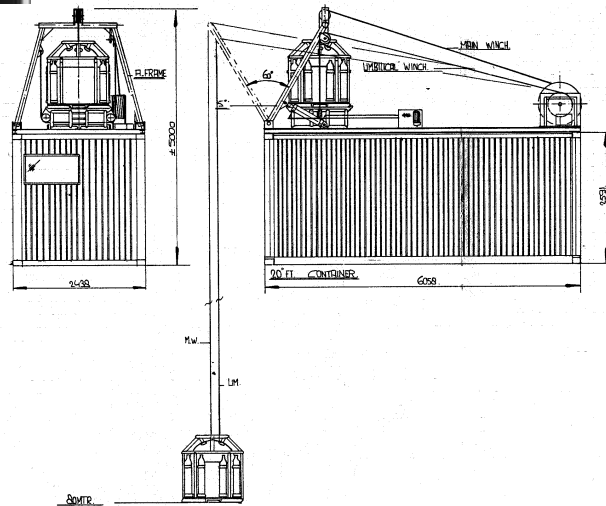


## HYTECH WET BELL AND HANDLING SYSTEMS



Open diving bells have become almost a necessity in commercial diving of today. The depth range of surface dives has increased drastically. Dives to 150 feet have become fairly common practice.

Open diving bells are an intermediate tool between shallow water divers and complete saturation applications. Open bells increase safety and productivity, provide refuge emergency breathing media, serve as a working platform for tools, shackles, vices etc. They effectively decrease lost bottom time of divers waiting at the down-line for tools and other equipment. **Hytech** builds wet bell systems complete with handling frame. The whole system can be built on top of a container for increased efficiency. Everything of course to your specifications.

**Hytech** has built several wet-bell diving systems such as:

- Wet-bell system on board of Army diving training ship
- Wet-bell system for Mexican Government
- Also several systems for Dutch and foreign diving companies

*Contact us for more extensive information on these systems.*

